

## List of articles - Door buffers

**Lohmann GmbH**

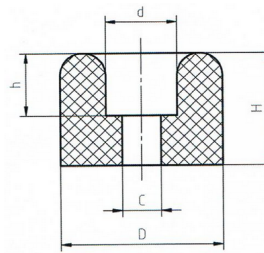
Bühlmattstrasse 7

6045 Meggen / Switzerland

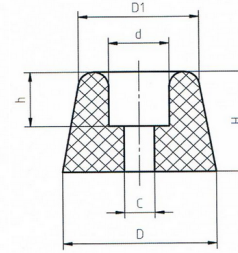
Tel. +41 41 377 41 14

info@silentblock.ch | info@silentblock.de

www.silentblock.ch | www.silentblock.de



Type A



Type B



Lohmann - part no.	diameter D / D1 (Type B)	diameter d	diameter C	height H	height h	x = available		other measurements upon request
						Type A	Type B	
LTP 016007 / hardness	16	9	4	7	3,5	x		
LTP 018016 / hardness	18	9,5	4,5	16	7	x		
LTP 020007 / hardness	20	12	4	7,5	4,5	x		
LTP 020010 / hardness	20 / 16	8	5	10	6		x	
LTP 020013 / hardness	20	10	4	13	6	x		
LTP 020022 / hardness	20	8	4	22	6	x		
LTP 021010 / hardness	21 / 18	10	4	10	4,5		x	
LTP 024013 / hardness	24	9	4	13	4	x		
LTP 025010 / hardness	25 / 20	7	4,5	10	6		x	
LTP 025012 / hardness	25 / 22	9	4,5	12	7		x	
LTP 026012 / hardness	26 / 24,5	9	4	12	4		x	
LTP 026014 / hardness	26	12	4	14	6	x		
LTP 026015 / hardness	26 / 22	12	4	15	9,5		x	
LTP 026029 / hardness	26	10	5	29	4	x		

Lohmann - part no.	diameter D / D1 (Type B)	diameter d	diameter C	height H	height h	x = available		other measurements upon request
						Type A	Type B	
LTP 028025 / hardness	28	14	6	25	15	x		
LTP 030017 / hardness	30	13	6	17	7	x		
LTP 030018 / hardness	30	12	7	18	5	x		
LTP 030022 / hardness	30	11	7	22	5	x		
LTP 030026 / hardness	30	12	7	26	5	x		
LTP 030032 / hardness	30	13	6	32	20	x		
LTP 030034 / hardness	30	12	7	34	50	x		
LTP 040025 / hardness	40	18	6	25	15	x		
LTP 040025X / hardness	40	20	7	25	8	x		
LTP 040031 / hardness	40	18	6	31	21	x		
LTP 040035 / hardness	40	20	7	35	8	x		
LTP 040040 / hardness	40	20	7	40	7	x		
LTP 040046 / hardness	40	16	6	46	32	x		
LTP 040050 / hardness	40	20	7	50	7	x		